

Met Disaster Triage Tags (50)

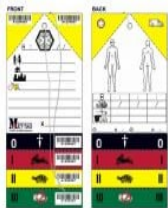
\$185.76

In stock
Only **1000** left
SKU 480032

 Add to Wish List

 Add to Compare

MET Disaster Triage Tags (50-pack) provide a robust, colour-coded triage system for mass casualty incidents (MCIs) and large-scale emergencies. Each waterproof, tear-resistant tag follows the standard four-colour priority code (immediate, delayed, minor, deceased) used by emergency services and disaster-response teams worldwide.



Details

What are MET Disaster Triage Tags?

MET Disaster Triage Tags are colour-coded patient triage tags used by paramedics, emergency responders, military medics and workplace emergency teams during mass casualty incidents (MCIs). When the number of patients exceeds immediate treatment capacity, triage tags allow responders to quickly sort casualties into treatment-priority categories so the most savable lives get help first.

This pack contains 50 individual tags with attached string and tear-off priority strip - enough for medium-scale incident planning and training.

Standard triage colour code

- **RED - Immediate (Priority 1):** life-threatening but treatable injuries requiring immediate care.
- **YELLOW - Delayed (Priority 2):** serious injuries that can wait a short time without deteriorating.
- **GREEN - Minor (Priority 3):** walking wounded, minor injuries.
- **BLACK - Deceased / Expectant:** no signs of life or non-survivable injuries.



Key features

- Tear-off priority strip allows quick visual re-triage as patients change status.
- Waterproof, weather-resistant card stock survives rain, blood and dust.
- Patient information panel for name, age, injury notes, vitals and treatment given.
- Attached string allows secure attachment to wrist, ankle or clothing.
- 50 tags per pack - sized for vehicle response kits and disaster planning caches.

Who uses MET triage tags

- Paramedics and ambulance services for MCI response.
- Hospital emergency departments during mass casualty arrivals.
- Workplace emergency teams for high-risk industrial sites.
- Schools and large venues for emergency planning.
- Defence force medics and search-and-rescue teams.
- Disaster relief organisations and major-event medical teams.

How to use a triage tag

After a brief primary assessment (often using the START algorithm - Simple Triage And Rapid Treatment), tear off the priority strip below the colour matching the patient's status. Attach the tag securely to the patient. Record key vitals, mechanism of injury, and any treatment given on the information panel. If status changes, tear the tag again to the new priority colour.

Frequently asked questions

What is the triage colour code on these tags?

MET Disaster Triage Tags use the international four-colour code: RED immediate (life-threatening but treatable), YELLOW delayed (serious but stable), GREEN minor (walking wounded), BLACK deceased or expectant. The same code used by ambulance services worldwide.

How many triage tags should we keep in our emergency kit?

Paramedic response kits typically carry 10 to 25 tags; industrial response teams 50 to 100; major-venue caches 200 or more. The 50-pack suits medium-risk workplaces, schools and event medical teams. Replace annually.



Are these tags compatible with the START triage system?

Yes. MET tags use the standard four-colour priority code fully compatible with START (Simple Triage And Rapid Treatment), JumpSTART paediatric, SALT and other major adult triage algorithms.

Are MET triage tags reusable?

No - triage tags are single-use. Once attached and torn to a priority colour, the tag is part of the patient's incident record and stays with them through transport and hospital handover. Replenish stock after any drill or real incident.

Related Products

Check items to add to the cart or select all